

Madison, Wisconsin

CITY OF MADISON

CITY ENGINEERING DIVISION

DEPARTMENT OF PUBLIC WORKS

PLAN OF PROPOSED IMPROVEMENT

PUBLIC IMPROVEMENT PROJECT APPROVED

JUNE 5, 2018

BY THE COMMON COUNCIL OF MADISON, WISCONSIN

PUBLIC IMPROVEMENT DESIGN APPROVED BY:

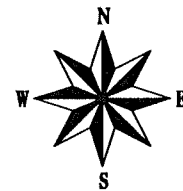
[Signature] 6/13/18
City Engineer Date

INDEX OF SHEETS

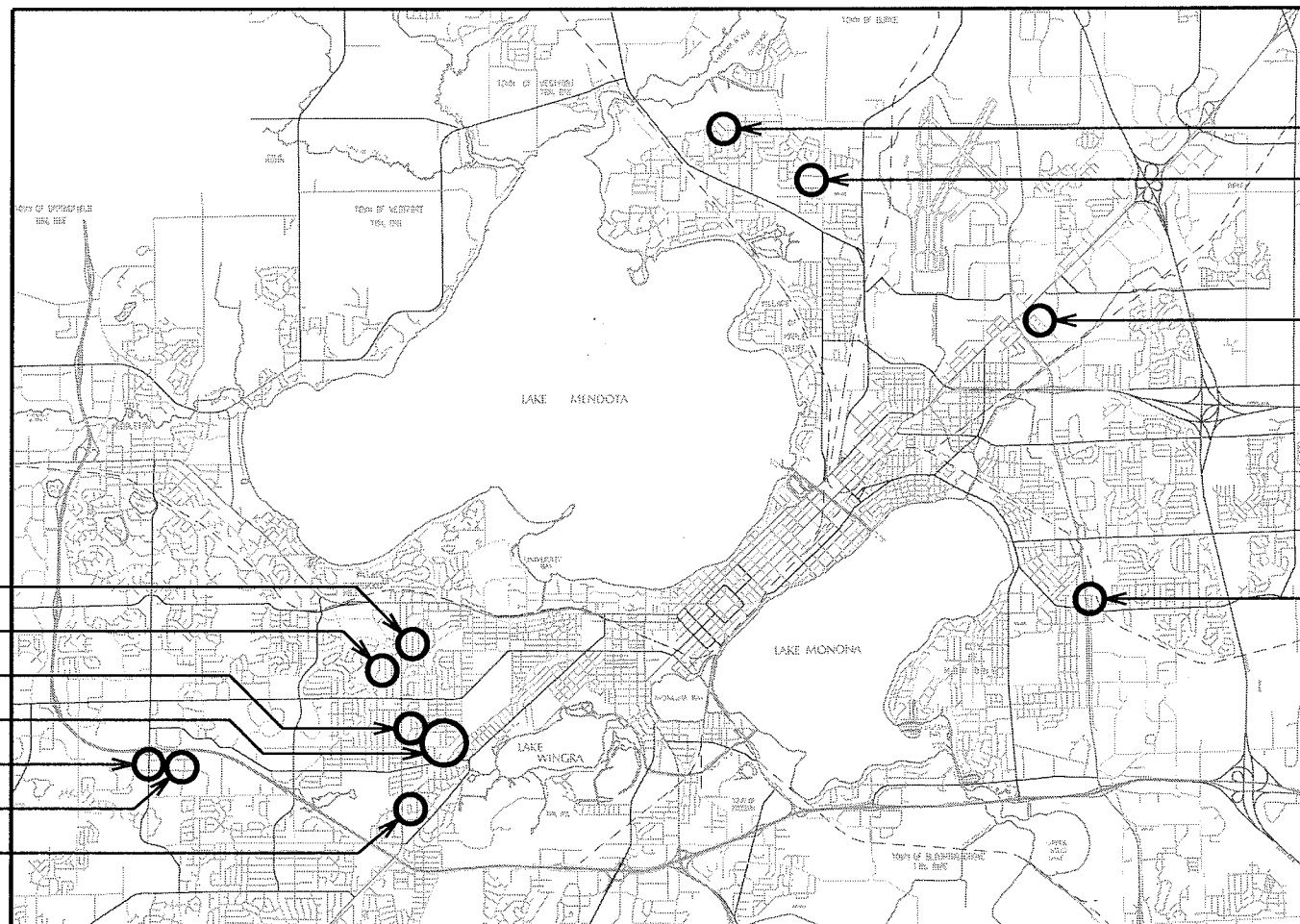
SHEET NO.	TITLE
1	
D1	DETAILED LINING LIMITS
P1	BLOSSOM LN PLANS
P2	MENDOTA ST PLANS
P3	NORTHLAND DR PLANS
P4	SUNFIELD ST PLANS
P5	HANOVER ST PLANS
P6	LAKE VIEW AVE PLANS
P7	CAROMAR DR, CLIFDEN DR, & S. OWEN DR PLANS
P8	HIAWATHA CIR PLANS
P9	N. HILLSIDE TER PLANS
P10	RICHLAND LN PLANS
P11	STRUCK ST & WATTS RD PLANS
P12	S. GAMMON RD PLANS
P13	GLEN DR PLANS
P14	TOKAY BLVD & TILLOTSON PARK PLANS
P15	RAVINE ST PLANS
P16	WESTMORLAND PARK PLANS
P17	GLENWOOD PARK PLANS

CIPP REHAB OF SANITARY SEWERS - 2018

CITY PROJECT NO. 11867
CITY CONTRACT NO. 8227



SANITARY & STORM SEWER DESIGNED BY:



SHEET P3

SHEET P4-P6

SHEET P2

SHEET P1

SHEET P9

SHEET P9

SHEET P6

SHEET P12-P16

SHEET P11

SHEET P10

SHEET P7

PLOT SCALE:

PLOT NAME:

REV. DATE:

ORIGINATOR: CITY OF MADISON, STREETS DIVISION

FILE NAME:

DATE: 6/12/2018

WEST MADISON

LOCATION	U.S. STRUCT.	D.S. STRUCT.	DIA (IN)	LENGTH (LF)	MATERIAL	LATERALS	SHEET
CAROMAR DR	SAS 3758-009	SAS 3758-008	8	178	VP	2	P-7
CAROMAR DR	SAS 3758-008	SAS 3757-013	8	226	VP	2	P-7
CAROMAR DR	SAS 3757-013	SAS 3757-012	8	143	VP	0	P-7
CAROMAR DR	SAS 3757-007	SAS 3757-008	8	238	VP	4	P-7
CAROMAR DR	SAS 3757-008	SAS 3757-012	8	166	VP	1	P-7
CLIFDEN DR	SAS 3757-012	SAS 3857-016	8	151	VP	1	P-7
CLIFDEN DR	SAS 3857-016	SAS 3857-017	8	154	VP	3	P-7
OWEN DR, S	SAS 3857-002	SAS 3857-017	8	278	VP	5	P-7
GLEN DR	SAS 3958-005	SAS 3958-015	12	297	VP	1	P-13
GLEN DR	SAS 3958-015	SAS 3958-019	12	160	VP	0	P-13
GLEN DR	SAS 3958-019	SAS 3958-016	12	239	VP	0	P-14
HIAWATHA CIR	SAS 3762-016	SAS 3762-015	8	252	VP	3	P-8
HIAWATHA CIR	SAS 3762-016	SAS 3763-009	8	198	VP	3	P-8
HIAWATHA CIR	SAS 3763-009	SAS 3763-008	8	153	VP	2	P-8
HIAWATHA CIR	SAS 3762-012	SAS 3763-008	8	180	VP	2	P-8
HIAWATHA CIR	SAS 3763-008	SAS 3863-002	8	156	VP	2	P-8
HIAWATHA CIR	SAS 3762-013	SAS 3762-012	8	180	VP	2	P-8
HIAWATHA CIR	SAS 3762-014	SAS 3762-013	8	125	VP	2	P-8
HIAWATHA CIR	SAS 3762-015	SAS 3762-014	8	123	VP	1	P-8
HILLSIDE TER, N	SAS 3852-001	SAS 3852-002	8	125	VP	4	P-9
RICHLAND LN	SAS 3654-003	SAS 3654-001	8	160	VP	0	P-10
RICHLAND LN	SAS 3654-001	SAS 3654-002	8	127	VP	0	P-10
GAMMON RD, S	SAS 2759-001	SAS 2759-002	8	296	VP	1	P-12
GAMMON RD, S	SAS 2759-002	SAS 2760-001	8	296	VP	1	P-12
STRUCK ST	SAS 2859-002	SAS 2860-006	8	256	VP	1	P-11
STRUCK ST	SAS 2860-006	SAS 2860-010	8	300	VP	1	P-11
WATTS RD	SAS 2860-010	MSD MH 12-162	8	195	VP	0	P-11
WATTS RD	SAS 2760-005	SAS 2860-012	8	320	VP	2	P-11
WATTS RD	SAS 2860-012	SAS 2860-011	8	255	VP	3	P-11
WATTS RD	SAS 2860-011	MSD MH 12-162	8	65	VP	1	P-11
TOKAY BLVD	SAS 3958-011	SAS 3959-020	12	253	VP	0	P-14
TILLOTSON PARK	SAS 3959-020	MIS 3959-023	12	89	VP	0	P-14
TILLOTSON PARK	MIS 3959-023	MIS 3959-024	12	95	CI	0	P-14
TILLOTSON PARK	MIS 3959-024	SAS 3959-021	12	62	VP	0	P-14
TILLOTSON PARK	SAS 3959-018	SAS 3959-019	8	237	VP	2	P-14
TILLOTSON PARK	SAS 3959-019	SAS 3959-020	8	102	VP	0	P-14
TOKAY BLVD	SAS 3958-016	SAS 3958-017	12	156	VP	0	P-14
TOKAY BLVD	SAS 3958-017	SAS 3958-011	12	322	VP	5	P-14
RAVINE ST	SAS 3959-021	SAS 3959-010	12	106	VP	0	P-15
RAVINE ST	SAS 3959-010	SAS 3959-006	12	103	VP	0	P-15
RAVINE ST	SAS 3959-006	SAS 3959-007	12	207	VP	0	P-15
RAVINE ST	SAS 3959-007	SAS 3959-009	12	283	VP	3	P-15
WESTMORLAND PARK	SAS 3858-009	SAS 3858-014	10	173	VP	0	P-16
WESTMORLAND PARK	SAS 3858-021	SAS 3858-022	8	237	VP	1	P-16
WESTMORLAND PARK	SAS 3858-022	SAS 3858-023	8	238	VP	0	P-16
WESTMORLAND PARK	SAS 3858-023	SAS 3858-014	8	177	VP	0	P-16
WESTMORLAND PARK	SAS 3858-014	SAS 3858-015	10	43	VP	0	P-16
WESTMORLAND PARK	SAS 3859-012	SAS 3858-015	8	258	VP	0	P-16
WESTMORLAND PARK	SAS 3858-015	SAS 3858-016	10	79	VP	0	P-16
WESTMORLAND PARK	SAS 3858-016	SAS 3858-017	10	202	VP	0	P-16
WESTMORLAND PARK	SAS 3858-017	SAS 3858-018	10	81	VP	0	P-16
WESTMORLAND PARK	SAS 3858-018	SAS 3958-022	10	194	VP	0	P-16
WESTMORLAND PARK	SAS 3859-014	SAS 3858-018	8	162	VP	0	P-16

STORM SEWER

LOCATION	U.S. STRUCT.	D.S. STRUCT.	DIA (IN)	LENGTH (LF)	MATERIAL	LATERALS	SHEET
GLENWOOD PARK	AE 4058-013	AS 4058-003	24	322	CMP	0	P-17

DETAILED LINING LIMITS

EAST MADISON

LOCATION	U.S. STRUCT.	D.S. STRUCT.	DIA (IN)	LENGTH (LF)	MATERIAL	LATERALS	SHEET
BLOSSOM LN	SAS 6650-002	SAS 6650-001	8	303	VP	4	P-1
BLOSSOM LN	SAS 6650-001	SAS 6649-004	8	310	VP	11	P-1
BLOSSOM LN	SAS 6649-004	SAS 6649-003	8	210	VP	2	P-1
BLOSSOM LN	SAS 6649-003	SAS 6649-002	8	268	VP	7	P-1
MENDOTA ST	SAS 6433-009	SAS 6433-010	8	226	VP	3	P-2
MENDOTA ST	SAS 6432-001	SAS 6432-002	8	317	VP	3	P-2
MENDOTA ST	SAS 6432-002	SAS 6432-007	8	290	VP	5	P-2
MENDOTA ST	SAS 6433-010	SAS 6432-008	8	75	VP	0	P-2
MENDOTA ST	SAS 6432-007	SAS 6432-008	8	235	VP	2	P-2
NORTHLAND DR	SAS 5120-019	SAS 5120-018	8	204	VP	1	P-3
NORTHLAND DR	SAS 5120-018	SAS 5020-001	8	23	VP	0	P-3
NORTHLAND DR	SAS 5020-001	SAS 5020-020	8	182	VP	3	P-3
NORTHLAND DR	SAS 5020-020	SAS 5020-019	8	222	VP	7	P-3
NORTHLAND DR	SAS 5020-019	SAS 5020-022	8	289	VP	8	P-3
SUNFIELD ST	SAS 5423-019	SAS 5423-018	8	297	VP	4	P-4
SUNFIELD ST	SAS 5423-018	SAS 5423-001	8	297	VP	2	P-4
SUNFIELD ST	SAS 5423-012	SAS 5423-011	6	213	VP	2	P-4
SUNFIELD ST	SAS 5423-011	SAS 5423-010	6	165	VP	1	P-4
SUNFIELD ST	SAS 5423-010	SAS 5423-009	8	231	VP	3	P-4
SUNFIELD ST	SAS 5423-009	SAS 5423-008	8	197	VP	2	P-4
SUNFIELD ST	SAS 5423-008	SAS 5423-006	8	246	VP	2	P-4
SUNFIELD ST	SAS 5423-007	SAS 5423-006	6	375	VP	4	P-4
SUNFIELD ST	SAS 5423-015	SAS 5423-006	6	428	VP	4	P-4
SUNFIELD ST	SAS 5423-006	SAS 5423-005	8	256	VP	0	P-4
SUNFIELD ST	SAS 5423-005	SAS 5424-015	8	245	VP	0	P-5
HANOVER ST	SAS 5424-015	SAS 5424-002	8	182	VP	0	P-5
HANOVER ST	SAS 5424-002	SAS 5424-001	8	132	VP	1	P-5
LAKE VIEW AVE	SAS 5424-007	SAS 5424-008	8	314	VP	5	P-6
LAKE VIEW AVE	SAS 5424-008	SAS 5424-009	8	282	VP	2	P-6

CIPP REHAB OF SANITARY SEWER - 2018
PROJECT NO. 11867

SHEET NO.
D-1

DETAILED LINING LIMITS

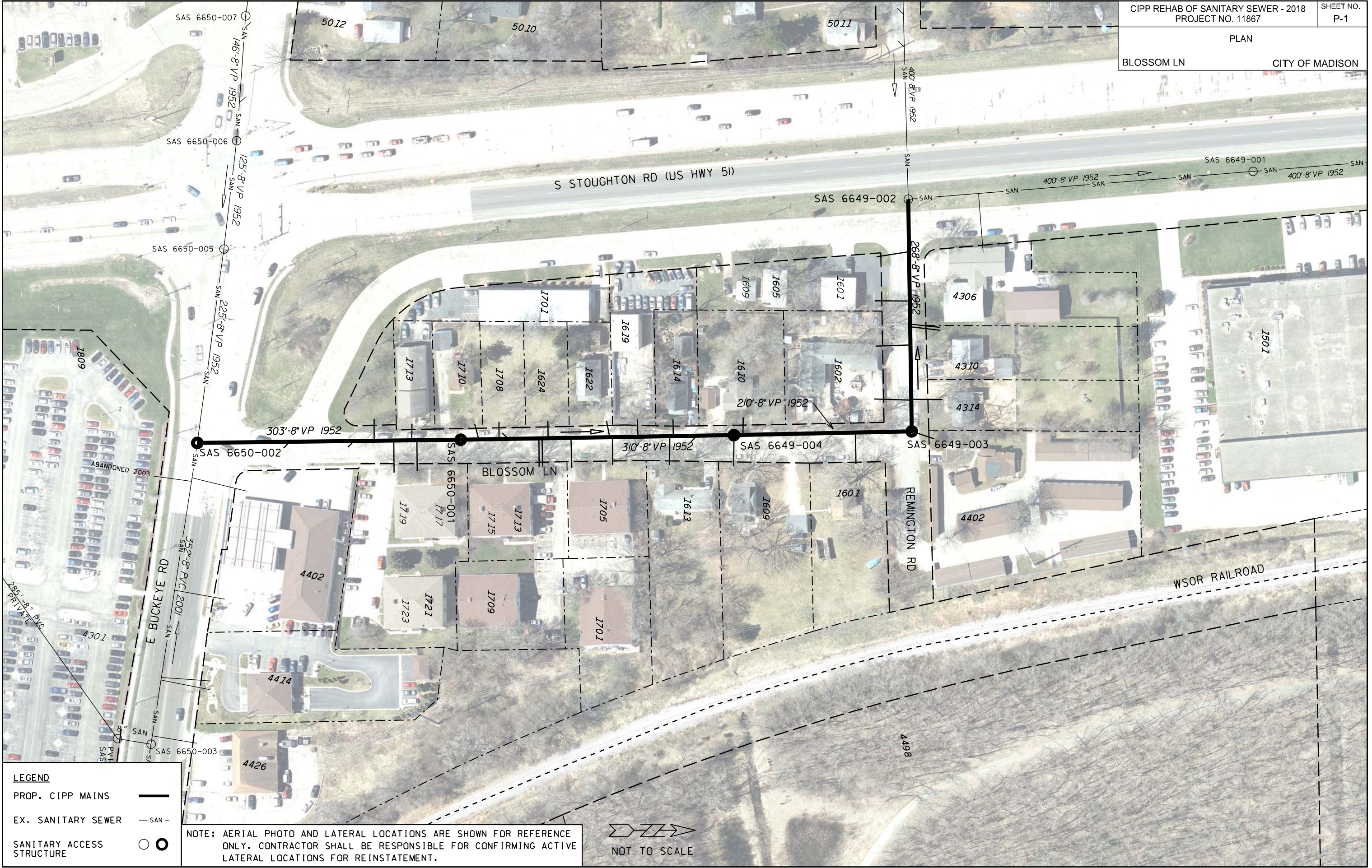
CITY OF MADISON

PLOT SCALE:

PLOT NAME:

REV. DATE:

ORIGINATOR: CITY OF MADISON, STREETS DIVISION



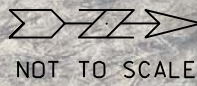
LEGEND

PROP. CIPP MAINS ———

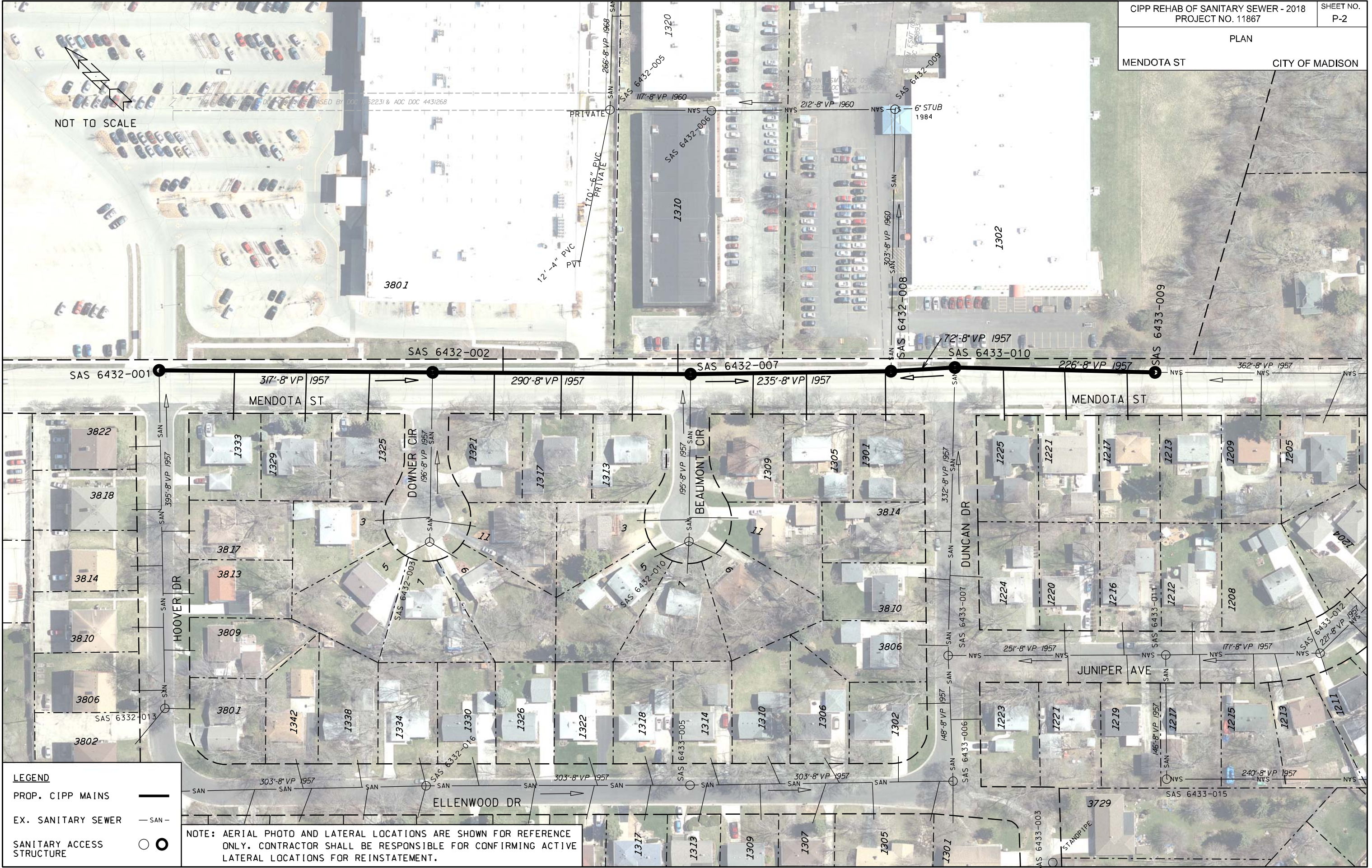
EX. SANITARY SEWER — SAN —

SANITARY ACCESS STRUCTURE ○

NOTE: AERIAL PHOTO AND LATERAL LOCATIONS ARE SHOWN FOR REFERENCE ONLY. CONTRACTOR SHALL BE RESPONSIBLE FOR CONFIRMING ACTIVE LATERAL LOCATIONS FOR REINSTATEMENT.



PLOT SCALE: NOT TO SCALE
 PLOT NAME:
 REV. DATE:
 ORIGINATOR: CITY OF MADISON - ENGINEERING



LEGEND

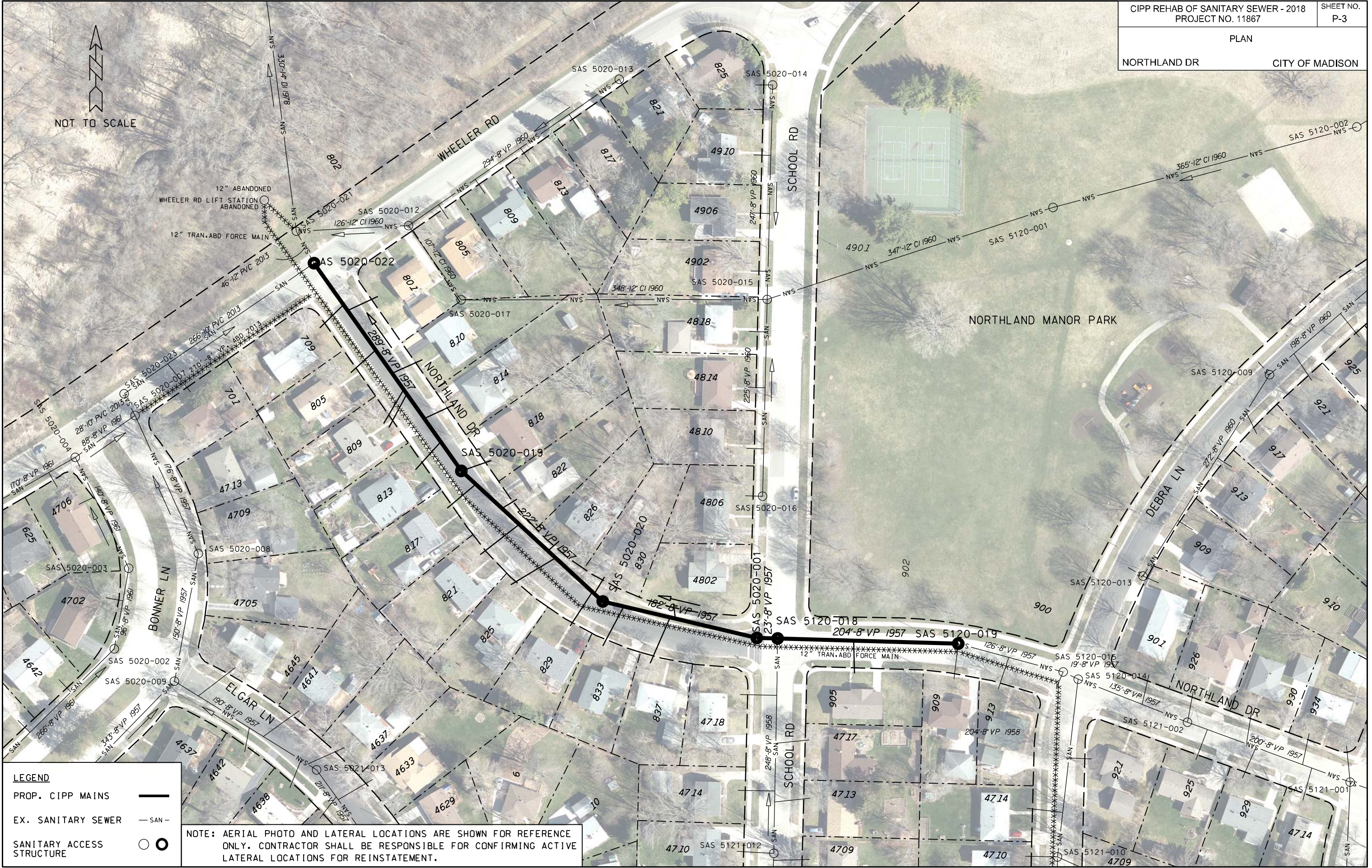
PROP. CIPP MAINS ———

EX. SANITARY SEWER — SAN —

SANITARY ACCESS STRUCTURE ○ ●

NOTE: AERIAL PHOTO AND LATERAL LOCATIONS ARE SHOWN FOR REFERENCE ONLY. CONTRACTOR SHALL BE RESPONSIBLE FOR CONFIRMING ACTIVE LATERAL LOCATIONS FOR REINSTATEMENT.

ORIGINATOR: CITY OF MADISON - ENGINEERING
 REV. DATE:
 PLOT NAME:
 PLOT SCALE: NOT TO SCALE



LEGEND

PROP. CIPP MAINS ———

EX. SANITARY SEWER — SAN —

SANITARY ACCESS STRUCTURE ○

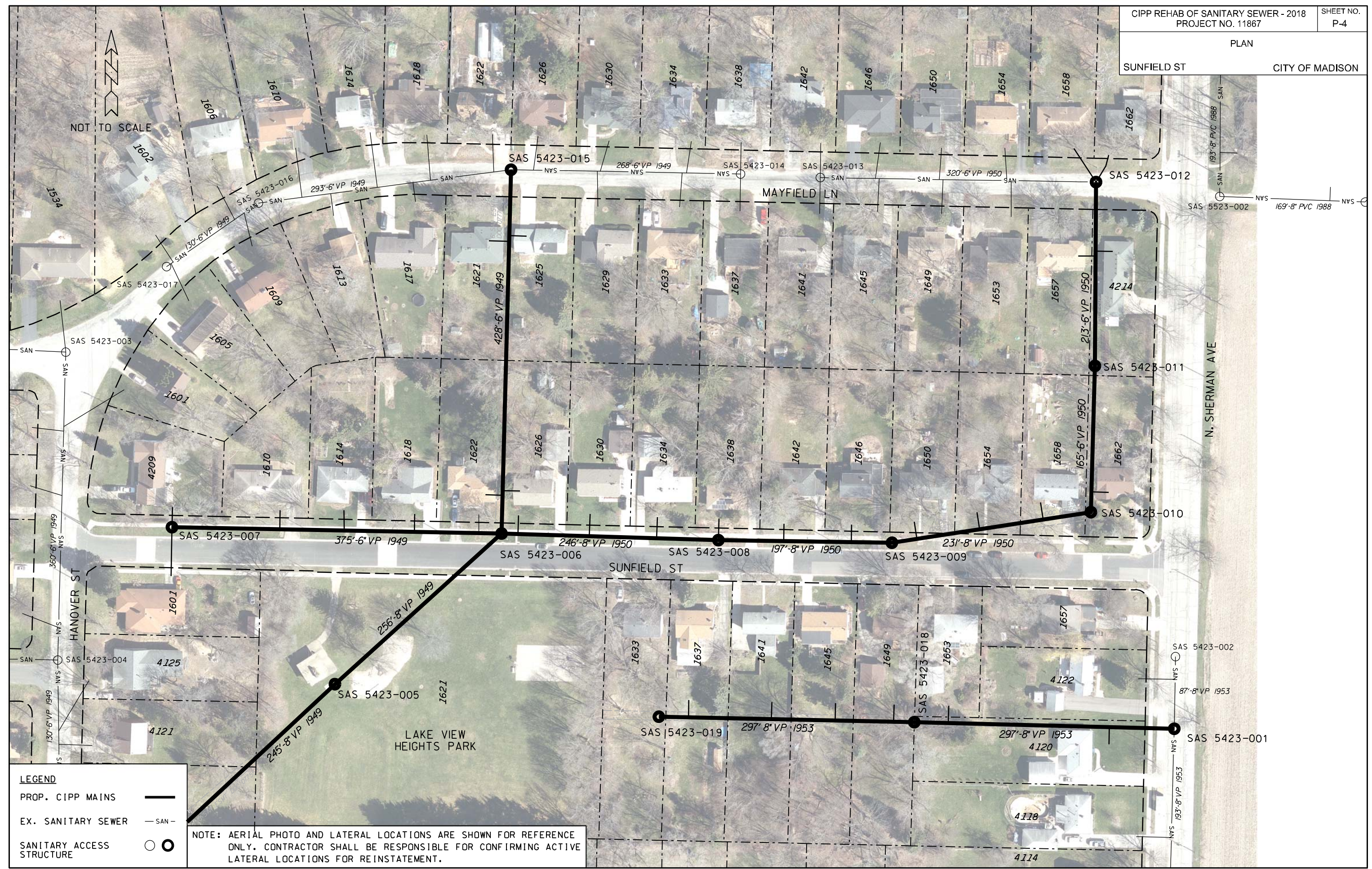
NOTE: AERIAL PHOTO AND LATERAL LOCATIONS ARE SHOWN FOR REFERENCE ONLY. CONTRACTOR SHALL BE RESPONSIBLE FOR CONFIRMING ACTIVE LATERAL LOCATIONS FOR REINSTATEMENT.

ORIGINATOR: CITY OF MADISON - ENGINEERING

REV. DATE:

PLOT NAME:

PLOT SCALE: NOT TO SCALE



LEGEND

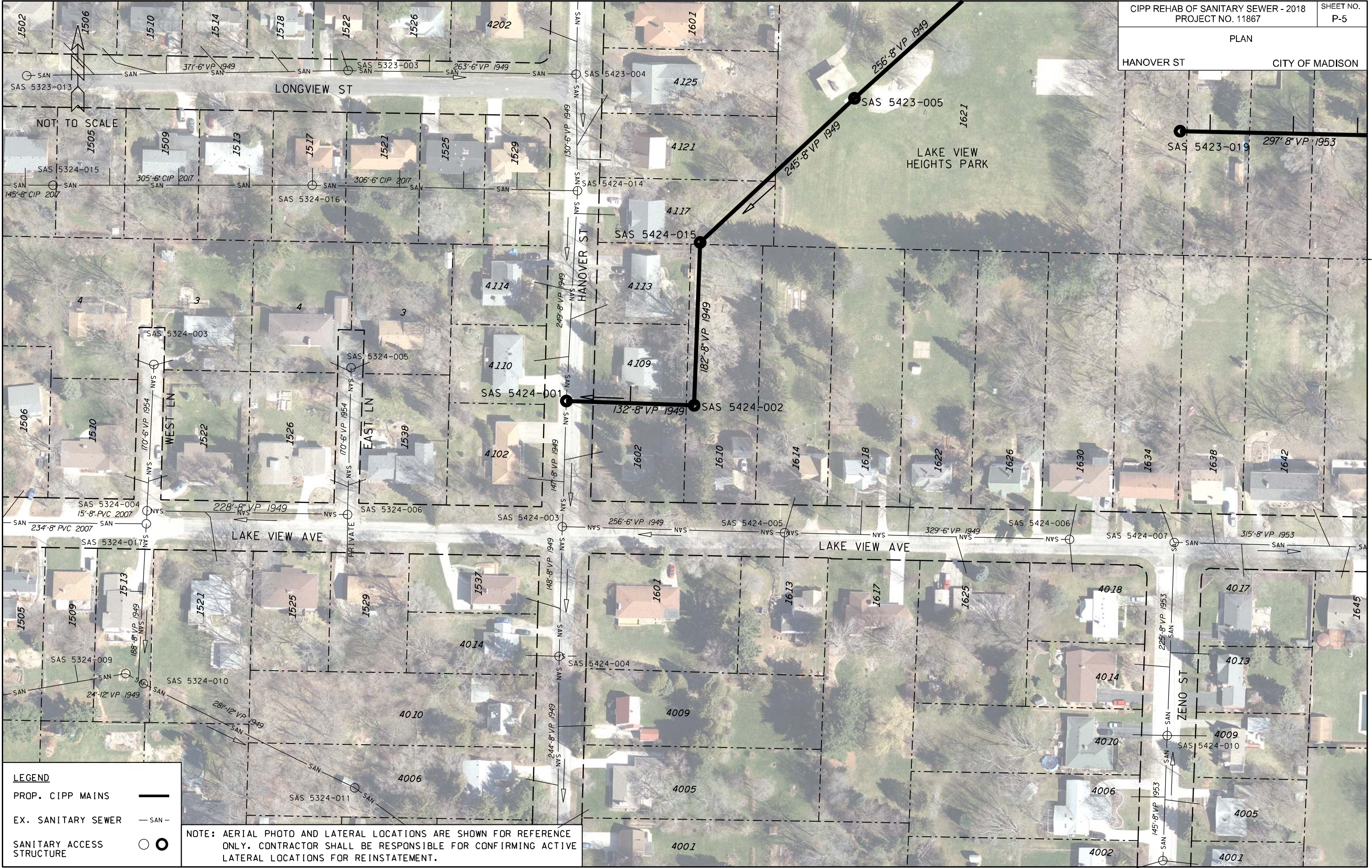
PROP. CIPP MAINS ———

EX. SANITARY SEWER - - - - -

SANITARY ACCESS STRUCTURE ○ ●

NOTE: AERIAL PHOTO AND LATERAL LOCATIONS ARE SHOWN FOR REFERENCE ONLY. CONTRACTOR SHALL BE RESPONSIBLE FOR CONFIRMING ACTIVE LATERAL LOCATIONS FOR REINSTATEMENT.

ORIGINATOR: CITY OF MADISON - ENGINEERING
 REV. DATE:
 PLOT NAME:
 PLOT SCALE: NOT TO SCALE



NOT TO SCALE

PLOT SCALE: NOT TO SCALE

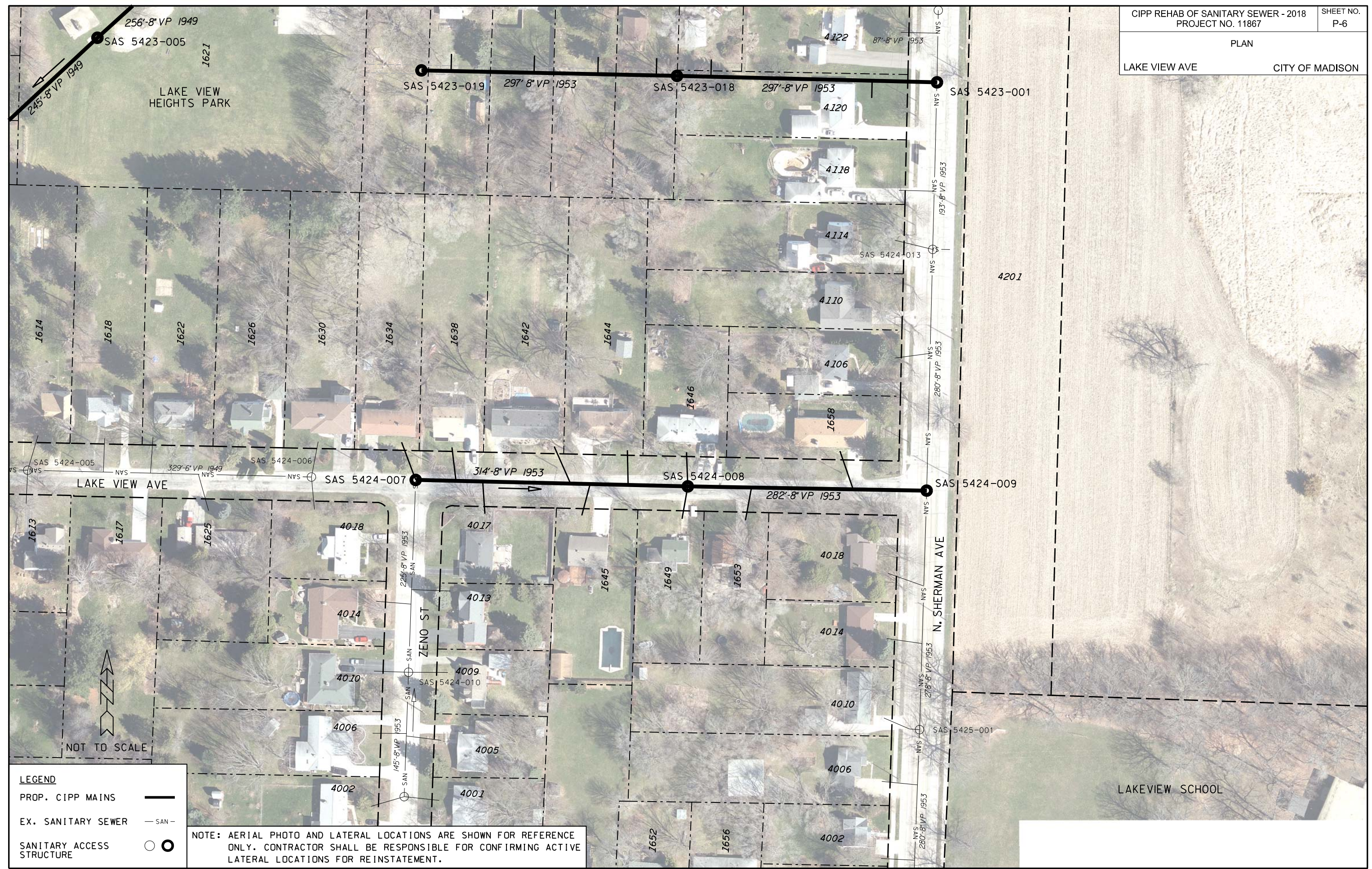
PLOT NAME:

REV. DATE:

ORIGINATOR: CITY OF MADISON - ENGINEERING

LEGEND	
PROP. CIPP MAINS	
EX. SANITARY SEWER	
SANITARY ACCESS STRUCTURE	

NOTE: AERIAL PHOTO AND LATERAL LOCATIONS ARE SHOWN FOR REFERENCE ONLY. CONTRACTOR SHALL BE RESPONSIBLE FOR CONFIRMING ACTIVE LATERAL LOCATIONS FOR REINSTATEMENT.



LEGEND

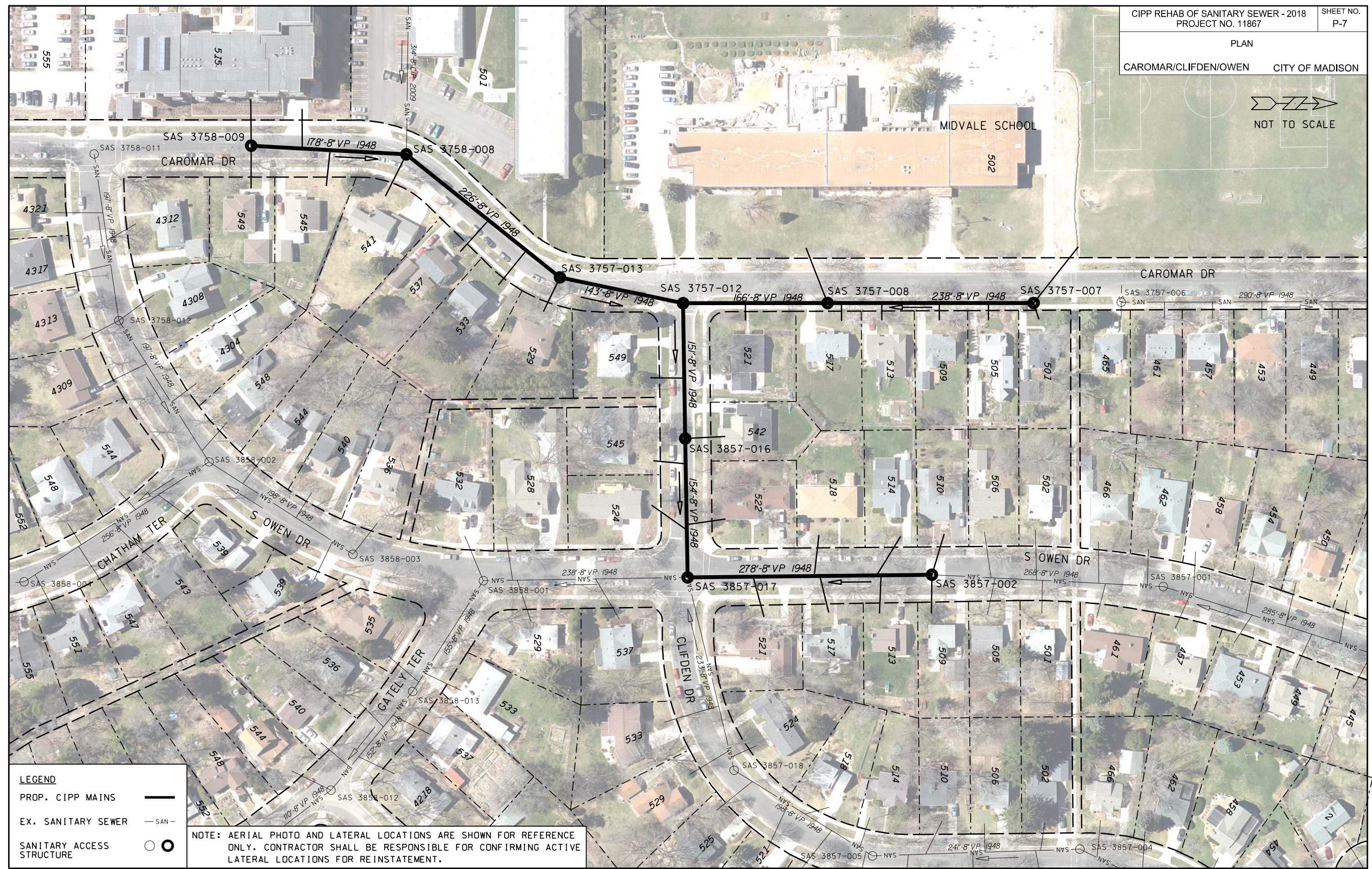
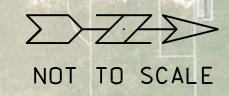
PROP. CIPP MAINS ———

EX. SANITARY SEWER — SAN —

SANITARY ACCESS STRUCTURE ○ ●

NOTE: AERIAL PHOTO AND LATERAL LOCATIONS ARE SHOWN FOR REFERENCE ONLY. CONTRACTOR SHALL BE RESPONSIBLE FOR CONFIRMING ACTIVE LATERAL LOCATIONS FOR REINSTATEMENT.

ORIGINATOR: CITY OF MADISON - ENGINEERING
 REV. DATE:
 PLOT NAME:
 PLOT SCALE: NOT TO SCALE



LEGEND

PROP. CIPP MAINS ———

EX. SANITARY SEWER - - - - -

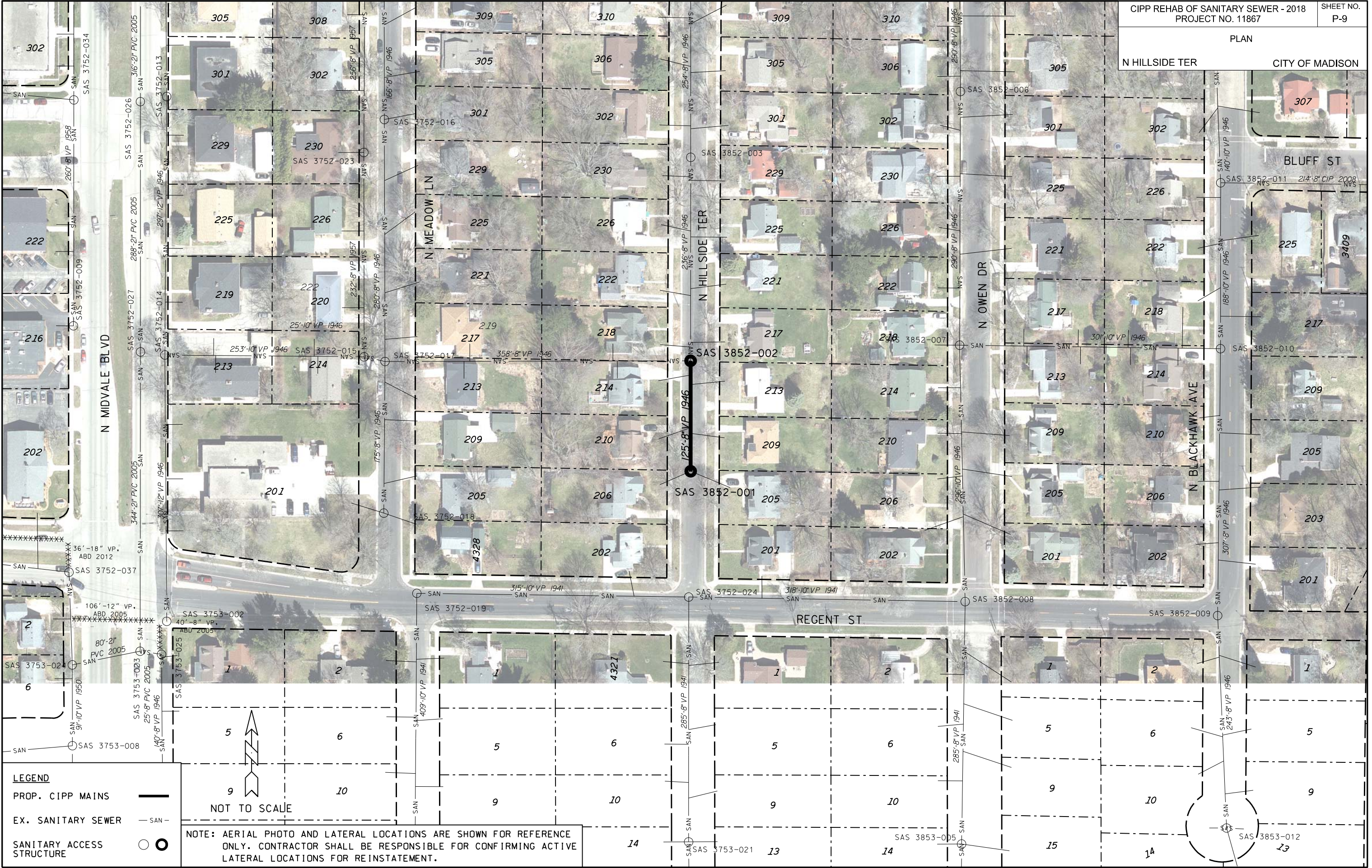
SANITARY ACCESS STRUCTURE ○

NOTE: AERIAL PHOTO AND LATERAL LOCATIONS ARE SHOWN FOR REFERENCE ONLY. CONTRACTOR SHALL BE RESPONSIBLE FOR CONFIRMING ACTIVE LATERAL LOCATIONS FOR REINSTATEMENT.

ORIGINATOR: CITY OF MADISON - ENGINEERING
 REV. DATE:
 PLOT NAME:
 PLOT SCALE: NOT TO SCALE

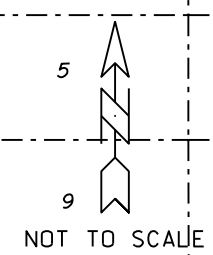
PLAN

N HILLSIDE TER CITY OF MADISON



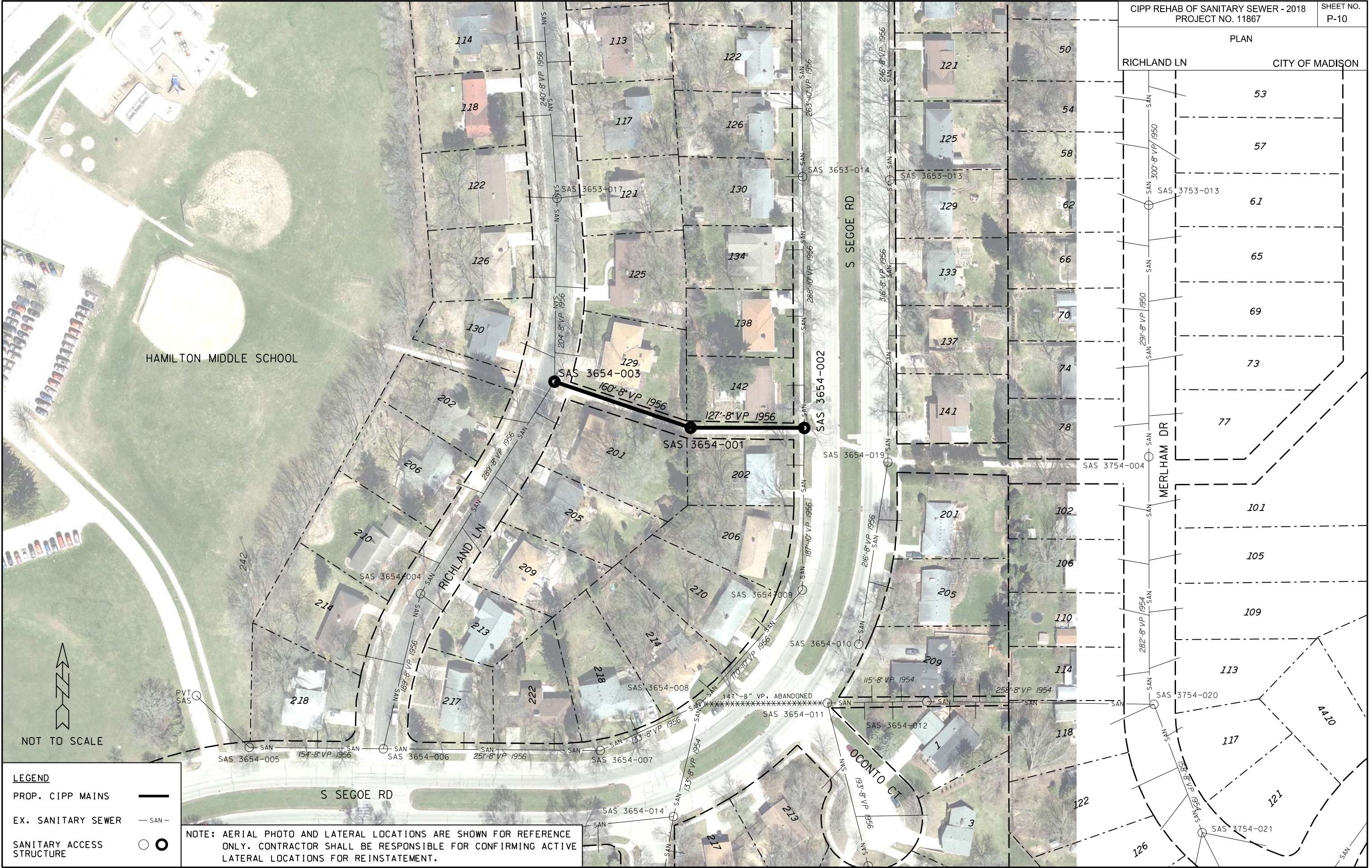
LEGEND

- PROP. CIPP MAINS ———
- EX. SANITARY SEWER — SAN —
- SANITARY ACCESS STRUCTURE ○



NOTE: AERIAL PHOTO AND LATERAL LOCATIONS ARE SHOWN FOR REFERENCE ONLY. CONTRACTOR SHALL BE RESPONSIBLE FOR CONFIRMING ACTIVE LATERAL LOCATIONS FOR REINSTATEMENT.

ORIGINATOR: CITY OF MADISON - ENGINEERING
 REV. DATE:
 PLOT NAME:
 PLOT SCALE: NOT TO SCALE



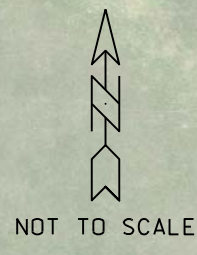
NOTE: AERIAL PHOTO AND LATERAL LOCATIONS ARE SHOWN FOR REFERENCE ONLY. CONTRACTOR SHALL BE RESPONSIBLE FOR CONFIRMING ACTIVE LATERAL LOCATIONS FOR REINSTATEMENT.

LEGEND

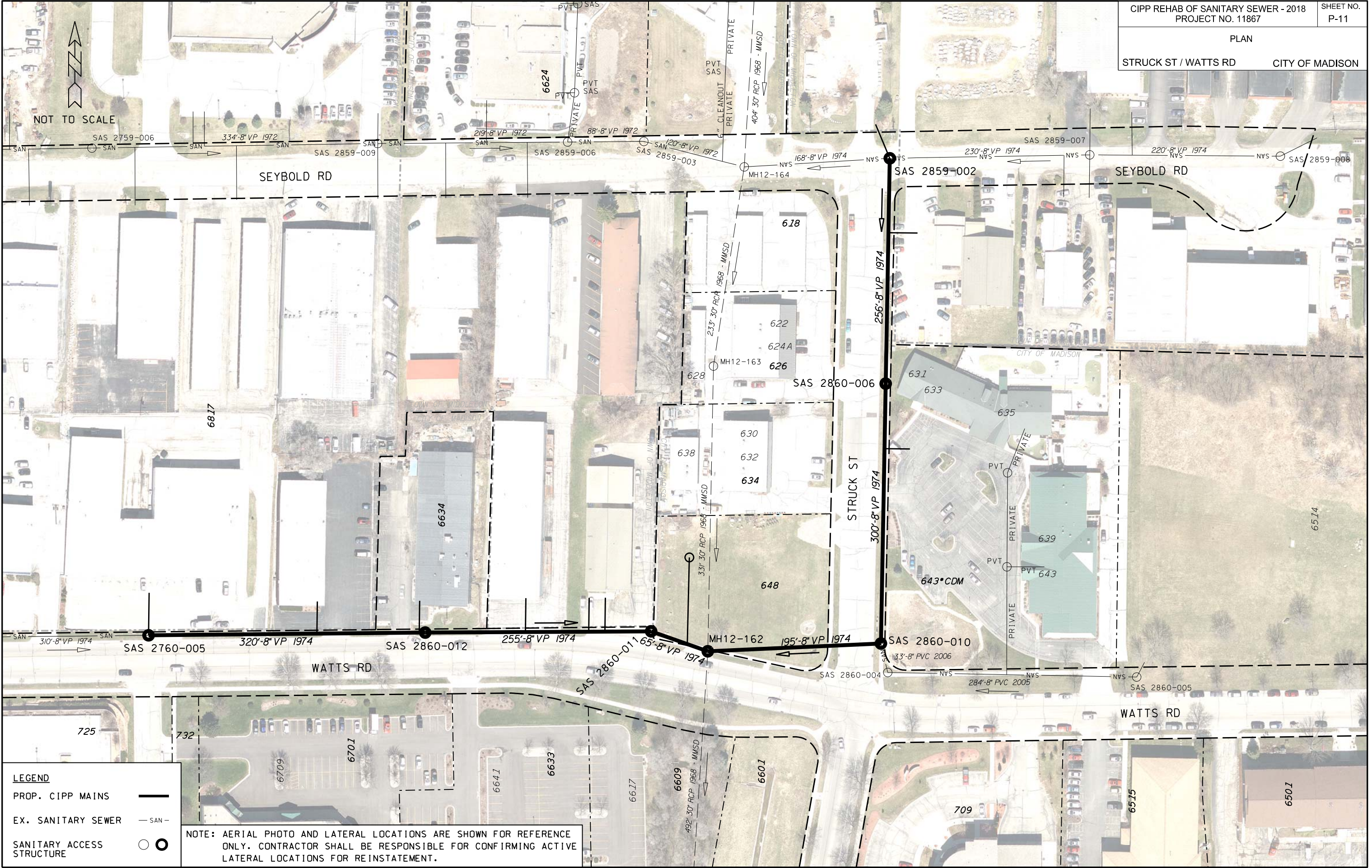
PROP. CIPP MAINS ———

EX. SANITARY SEWER — SAN —

SANITARY ACCESS STRUCTURE ○ ●



ORIGINATOR: CITY OF MADISON - ENGINEERING
 REV. DATE:
 PLOT NAME:
 PLOT SCALE: NOT TO SCALE



PLOT SCALE: NOT TO SCALE

PLOT NAME:

REV. DATE:

ORIGINATOR: CITY OF MADISON - ENGINEERING

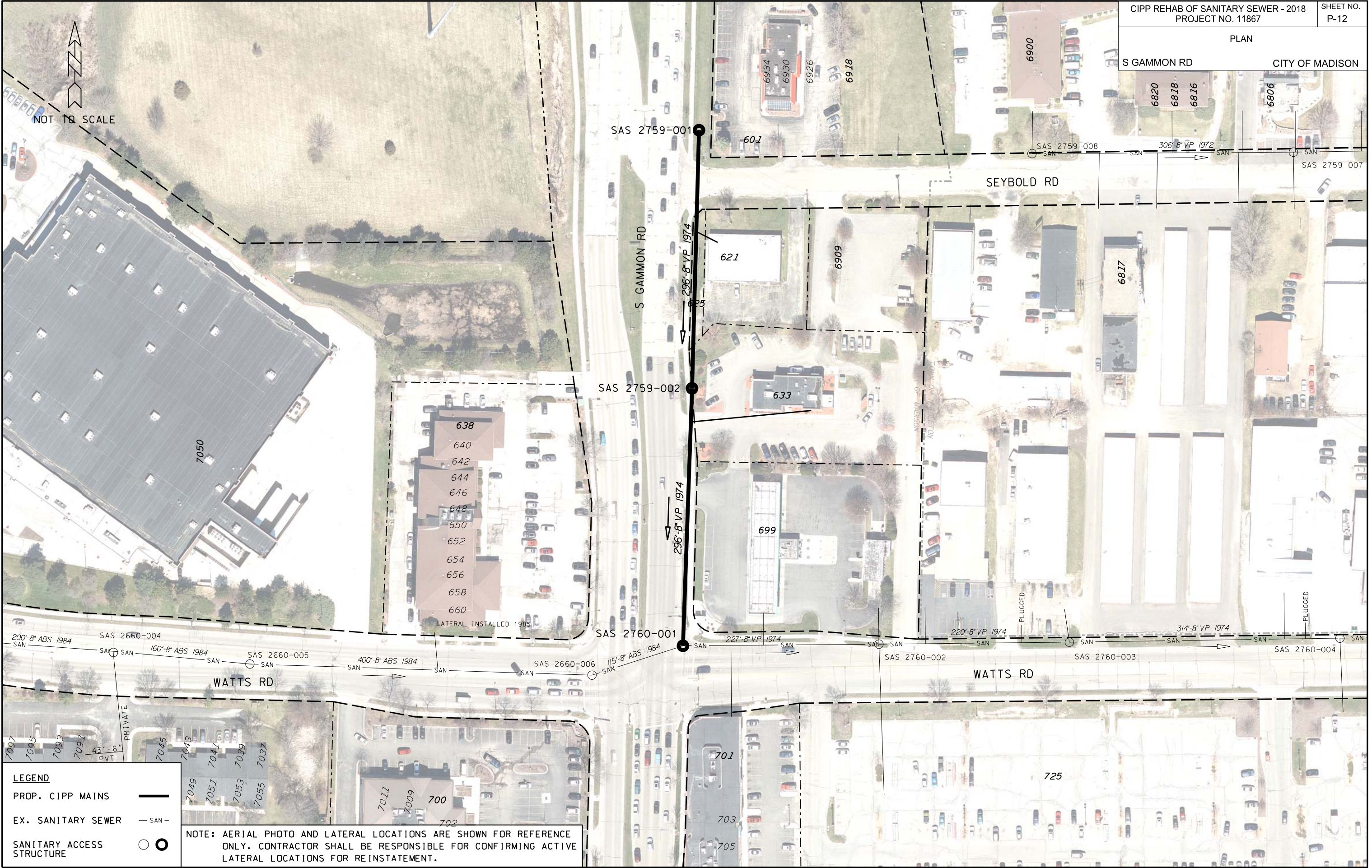
LEGEND

PROP. CIPP MAINS ———

EX. SANITARY SEWER — SAN —

SANITARY ACCESS STRUCTURE ○ ●

NOTE: AERIAL PHOTO AND LATERAL LOCATIONS ARE SHOWN FOR REFERENCE ONLY. CONTRACTOR SHALL BE RESPONSIBLE FOR CONFIRMING ACTIVE LATERAL LOCATIONS FOR REINSTATEMENT.



NOT TO SCALE

PLOT SCALE: NOT TO SCALE

PLOT NAME:

REV. DATE:

ORIGINATOR: CITY OF MADISON - ENGINEERING

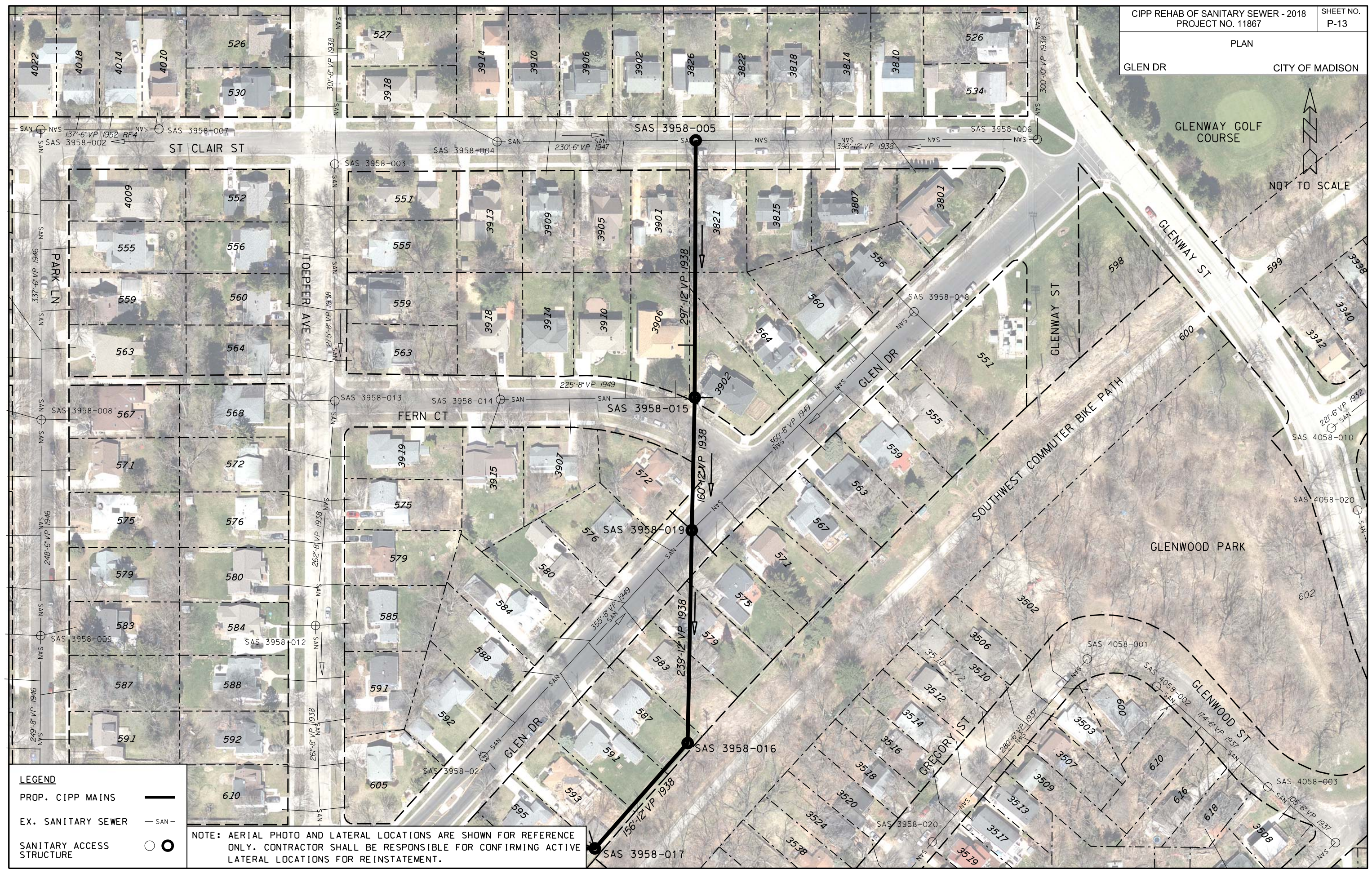
LEGEND

PROP. CIPP MAINS ———

EX. SANITARY SEWER — SAN —

SANITARY ACCESS STRUCTURE ○ ●

NOTE: AERIAL PHOTO AND LATERAL LOCATIONS ARE SHOWN FOR REFERENCE ONLY. CONTRACTOR SHALL BE RESPONSIBLE FOR CONFIRMING ACTIVE LATERAL LOCATIONS FOR REINSTATEMENT.



ORIGINATOR: CITY OF MADISON - ENGINEERING
 REV. DATE:
 PLOT NAME:
 PLOT SCALE: NOT TO SCALE

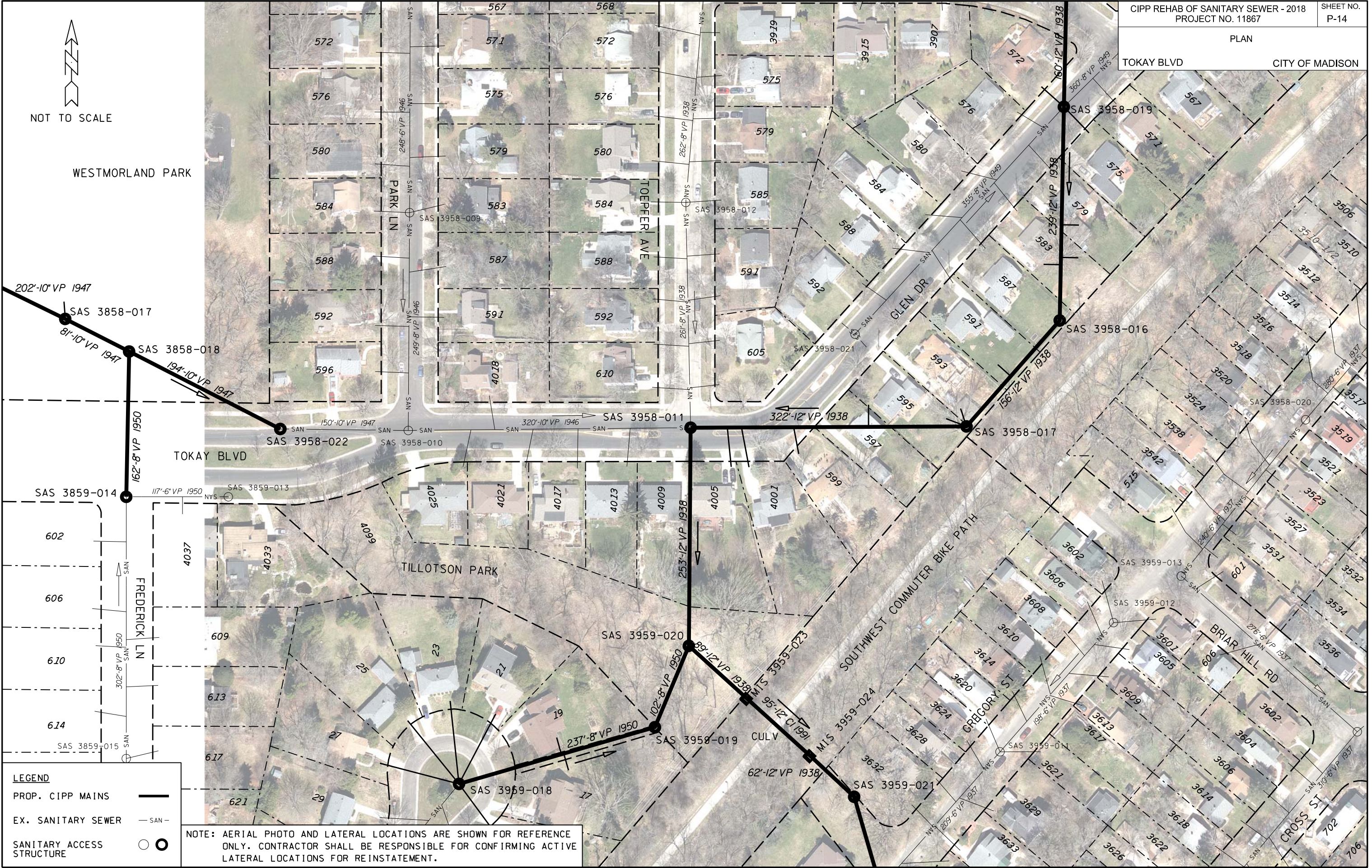
LEGEND

PROP. CIPP MAINS ———

EX. SANITARY SEWER — SAN —

SANITARY ACCESS STRUCTURE ○ ●

NOTE: AERIAL PHOTO AND LATERAL LOCATIONS ARE SHOWN FOR REFERENCE ONLY. CONTRACTOR SHALL BE RESPONSIBLE FOR CONFIRMING ACTIVE LATERAL LOCATIONS FOR REINSTATEMENT.



NOT TO SCALE

WESTMORLAND PARK

TOKAY BLVD

TILLOTSON PARK

SOUTHWEST COMMUTER BIKE PATH

BRIAR HILL RD

LEGEND

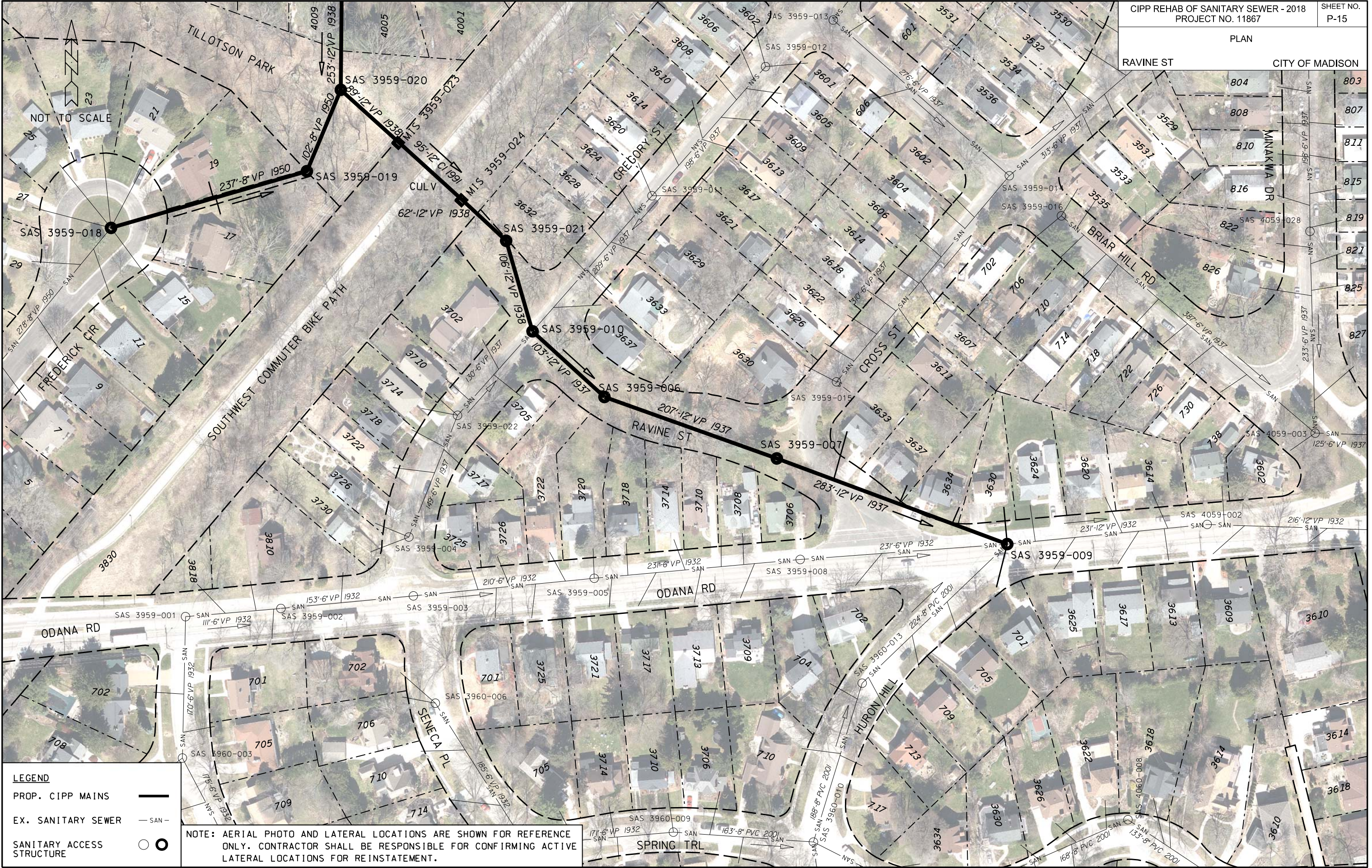
PROP. CIPP MAINS ———

EX. SANITARY SEWER — SAN —

SANITARY ACCESS STRUCTURE ○

NOTE: AERIAL PHOTO AND LATERAL LOCATIONS ARE SHOWN FOR REFERENCE ONLY. CONTRACTOR SHALL BE RESPONSIBLE FOR CONFIRMING ACTIVE LATERAL LOCATIONS FOR REINSTATEMENT.

ORIGINATOR: CITY OF MADISON - ENGINEERING
 REV. DATE:
 PLOT NAME:
 PLOT SCALE: NOT TO SCALE



LEGEND

PROP. CIPP MAINS ———

EX. SANITARY SEWER — SAN —

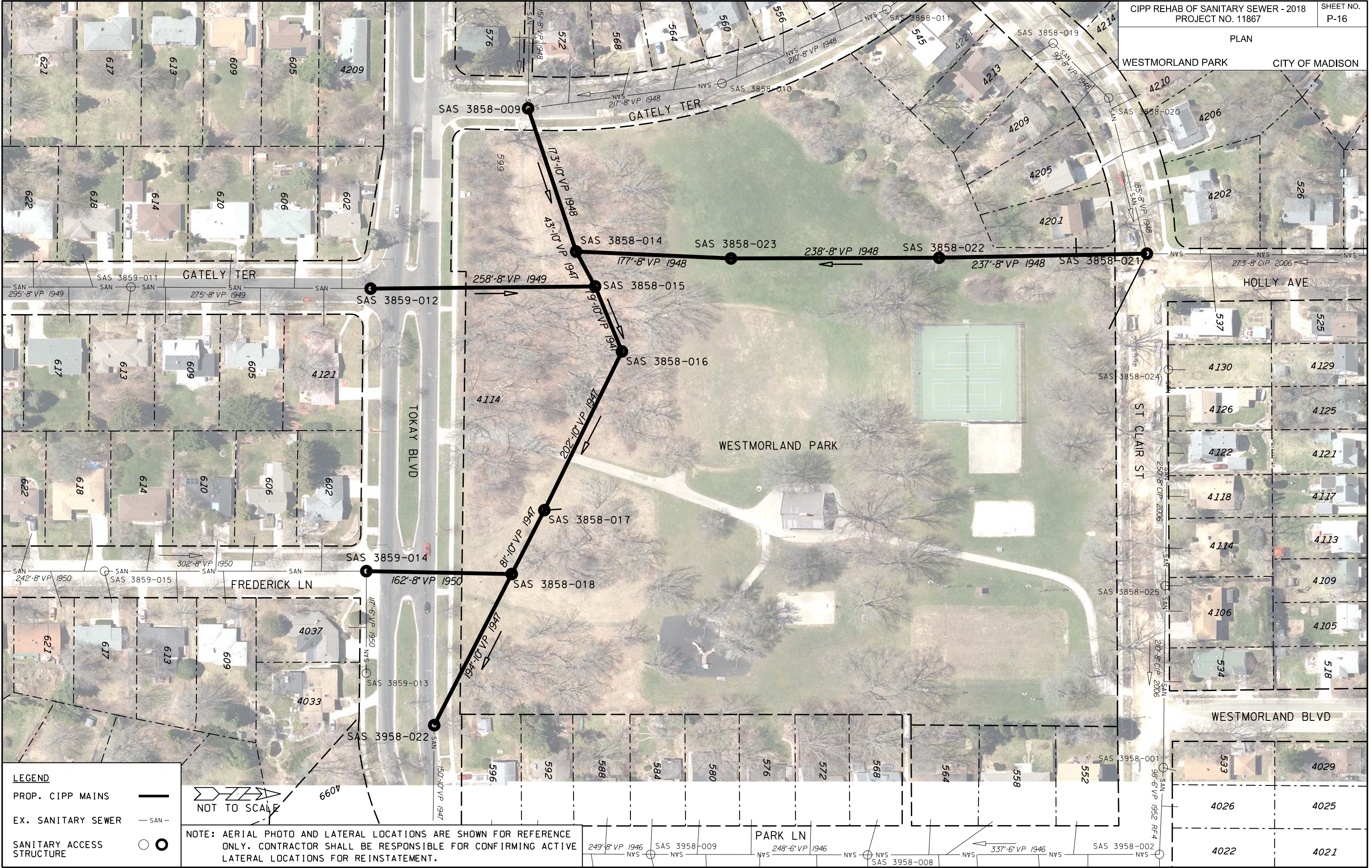
SANITARY ACCESS STRUCTURE ○

NOTE: AERIAL PHOTO AND LATERAL LOCATIONS ARE SHOWN FOR REFERENCE ONLY. CONTRACTOR SHALL BE RESPONSIBLE FOR CONFIRMING ACTIVE LATERAL LOCATIONS FOR REINSTATEMENT.

ORIGINATOR: CITY OF MADISON - ENGINEERING
 REV. DATE:
 PLOT NAME:
 PLOT SCALE: NOT TO SCALE

PLAN

WESTMORLAND PARK CITY OF MADISON



PLOT SCALE: NOT TO SCALE

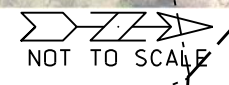
PLOT NAME:

REV. DATE:

ORIGINATOR: CITY OF MADISON - ENGINEERING

LEGEND

- PROP. CIPP MAINS ———
- EX. SANITARY SEWER — SAN —
- SANITARY ACCESS STRUCTURE ○ ●



NOTE: AERIAL PHOTO AND LATERAL LOCATIONS ARE SHOWN FOR REFERENCE ONLY. CONTRACTOR SHALL BE RESPONSIBLE FOR CONFIRMING ACTIVE LATERAL LOCATIONS FOR REINSTATEMENT.

NOTE: THE SECTION SHOWN FOR CIPP LINING ON THIS SHEET IS A STORM SEWER MAIN, NOT SANITARY SEWER MAIN.

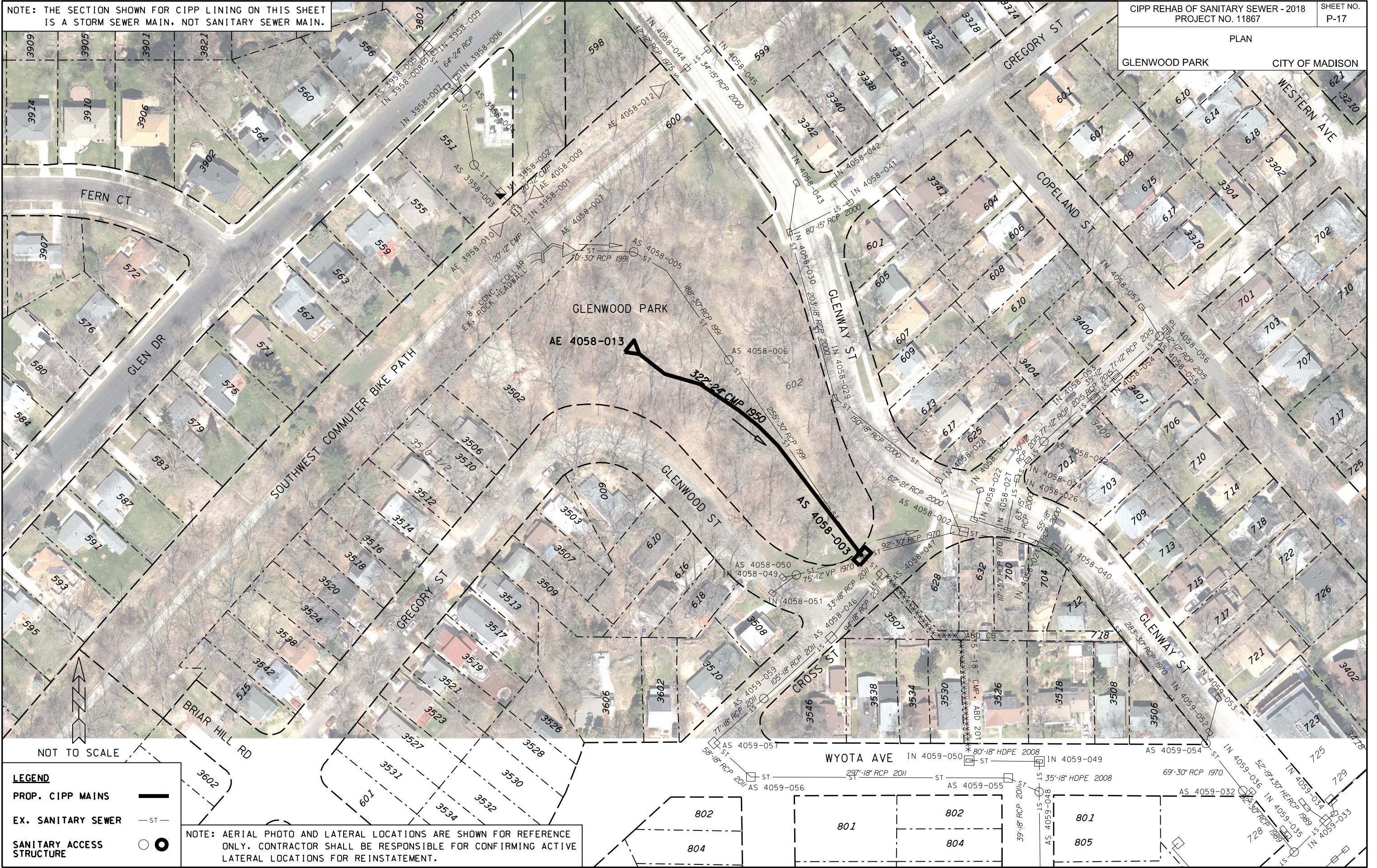
CIPP REHAB OF SANITARY SEWER - 2018
PROJECT NO. 11867

SHEET NO.
P-17

PLAN

GLENWOOD PARK

CITY OF MADISON



PLOT SCALE: NOT TO SCALE

PLOT NAME:

REV. DATE:

ORIGINATOR: CITY OF MADISON - ENGINEERING

NOT TO SCALE

LEGEND

- PROP. CIPP MAINS ———
- EX. SANITARY SEWER — ST —
- SANITARY ACCESS STRUCTURE ○ ●

NOTE: AERIAL PHOTO AND LATERAL LOCATIONS ARE SHOWN FOR REFERENCE ONLY. CONTRACTOR SHALL BE RESPONSIBLE FOR CONFIRMING ACTIVE LATERAL LOCATIONS FOR REINSTATEMENT.